

SLENDERIIZ

drop to drop

PHASE ONE: **PREPARATION**



CUT OUT FAST FOOD

Start your Slenderiiz Program by telling your fast food cravings to take a hike! It's called "junk" food for a reason. Junk foods are processed foods that will minimize your fat loss by spiking blood sugar and increasing inflammation from starch and vegetable oils that cause disease and ruin your metabolism.



PREPARE YOUR BODY

Prepare your body for the Fat Burning Phase for two days by eating as normal with the exception of cutting out fast foods. For optimal results, start adding healthy fats to your diet such as avocado, raw nuts and seeds, and begin taking Slenderiix & Xceler8 as directed.

HANDY TIP: Adding ARIIX supplements to your daily health regimen, while participating in the Slenderiix Program, can provide crucial cellular nutrition, rebalance body fat stores and optimize your metabolism. It can also support normal blood sugar, hormone and energy levels. [†]

[†] These statements have not been evaluated by the Food & Drug Administration. This product is not intended to diagnose, treat, cure or prevent any disease.

PHASE TWO: **FAT BURNING**

To start your Fat Burning Phase, go through your cupboards and toss out cookies, pastries, candy, processed meats, potato chips, soda, high-sodium frozen foods, boxed foods and canned soups.

HANDY TIP: If you find yourself hitting a plateau after six months of beginning your program and you have stopped losing weight before you have reached your goal, it is recommended you discontinue taking the Slenderix drops for one month. Continue taking the Xceler8 drops and consider adding Rejuvenix with breakfast. This will jumpstart your body allowing further weight loss.

TRACK YOUR INTAKE

It is important to track and keep your daily intake under 1250 calories. If your body feels full, you do not need to hit the 1250 calorie mark.

Each day, eat three regular healthy meals, with foods only from the Approved Food List. If you prefer, you may choose to spread your calories out to include smaller meals and two snacks.

Your highest calorie meal should be breakfast and lowest calorie meal should be dinner, allowing your body time to digest and burn off calories before resting in the evening.

HANDY TIP: Use PureNourish for two meals each day with water, or unsweetened almond or coconut milk and $\frac{1}{2}$ cup of added fruit. Lowest in sugar means highest in fat burning. These are: strawberries, blackberries, raspberries or blueberries.

DRINK PURIFIED WATER



For optimal results, drink at least eight to ten 8-ounce glasses of purified water daily. This allows your body to remove toxins and flush them away as you begin burning up fat stores.

HANDY TIP: ARIIX Puritii water filter bottles are a great choice for keeping purified water on hand at all times.



EXERCISE

A modest aerobic exercise program is good for your health. Start walking, hiking, swimming, jogging, biking, etc. for 15-30 minutes, five times per week.

If you have not been getting much exercise prior to this program, it is important to begin slowly and build up to our recommended level of exercise over the next few weeks.

Note: When you exercise, you lose fat and gain muscle which slows the appearance of your weight loss on the scale, because muscle weighs more than fat but takes up less space. Be sure to keep measurements to track your progress if you are active with weight bearing exercises.

HANDY TIP: Use a pedometer and try to reach or exceed 10,000 steps each day.

REMEMBER:

Only eat from the Approved Food List
Count calories
Track water intake

A ROUTINE SCHEDULE IS GOOD.

Remember: Don't fear fat! Good fats are good for you!

Eat the most calories in the morning and the least amount at night to allow your body all day to burn them off.

Do not eat after 7 p.m. to allow your body time to burn off the calories while you are still walking around. Eating even a small dinner and then zoning out for the rest of the night is damaging to metabolism and interferes with digestion and quality sleep.

PLAN YOUR MEALS IN ADVANCE.

Using our tools on [Slenderiiz.com/support](https://slenderiiz.com/support), you will find simple meals you can make for your week.

Reduce your temptation for unnecessary foods by having a grocery list and sticking around the edges of the grocery store. This is where you will find fresh foods that are the most healing and rev up your metabolism.

For a supportive community of people like you looking to make a difference in their lives and health, go to www.slenderiiz.com/support/social.

Find recipes and other tips on www.slenderiiz.com.

APPROVED FOOD LIST

Focus on fresh organic foods to help you avoid sodium, unhealthy fats, and processed foods that will spike your blood sugar, cause inflammation and shut down your weight loss.

PROTEIN

Chicken
(free-range, raised
without hormones is best)

Eggs
(free-range)

Grass-Fed
Beef
(ground, steak,
tips, roast)

Turkey
(fresh, not pre-served lunch meat)

Turkey Bacon
(nitrate free)

Venison

Any White Fish
(wild is best,
not farm-raised)

Halibut

Tilapia

Flounder

Salmon

Tuna

Lobster

Crab

Shrimp

All vegetarian
proteins work
as part of
this program.

Quinoa

Organic Tofu

Raw or
Sprouted Nuts
(not as low in
calories, or as
filling as quinoa
and tofu)

Tempeh

Beans
(high in calories
for small amounts)
Note: Do not
combine with
fruit or meat at
the same meal.

Low-carb
Protein Bar

VEGETABLES

Anything green is good,
so try new greens!

Artichokes

Asparagus

Arugula

Bean Sprouts

Beet Greens

Brussels
Sprouts

Broccoli

Bamboo
Shoots

Bell Peppers

Bok Choy

Cabbage

Carrots

Cauliflower

Chicory
Greens

Chili Peppers

Collard
Greens

Cucumbers

Dandelion
Greens

Dill Pickles

Endive

Escarole

Green Beans

Green Leaf
Lettuce

Kale

Mushrooms

Mustard
Greens

Onions

Peas

Radicchio
Greens

Radishes

Red Leaf
Lettuce

Romaine
Lettuce

Spinach

Sprouts

Summer
Squash

Swiss Chard

Yellow
Squash

Zucchini

Sea Vegetables,
Including:

Nori

Dulse

Hijiki

Kelp

Kombu

Wakame

FRUITS

Organic fruits are best.

Best Choice
for lowest
sugar content:

2nd Best:

Pears

Apples

Peaches

Strawberries

Plums

Blueberries

Fresh Figs

Blackberries

Kiwi

Raspberries

3rd Best:

Oranges

Tomatoes

Tangerines

Nectarines

HEALTHY FATS

These fats are building blocks to support a healthy immune system. You should reserve a minimum of 250–300 of your calories for these fats.

Coconut Oil

(may be used safely for cooking
1 tbsp = 100 calories)

2 oz of chia seeds, hemp seeds, raw pumpkin seeds, raw walnuts or 2 tsp of their cold pressed oils (may be used for salad dressing)

Avoid vegetable and other seed oils completely

HERBS

Basil

Oregano

Bay Leaf

Parsley

Chives

Rosemary

Cilantro

Thyme

Mint

Sage

SPICES

Salt and sugar free spices are a great option to liven up your meals with the Slenderiiz Program. Here are some options:

Apple Cider

Lemon

Vinegar

Lime

Black Pepper

Mustard

Cayenne

Onion

Cumin

Powder

Curry

Real Sea Salt
(not isolated
sodium table salt)

Dulse Flakes

Garlic

Turmeric

Kelp Flakes

SWEETENERS

Liquid Stevia drops or Stevia powder that does not contain maltodextrin.

CONDIMENTS

Fermented condiments like kimchi or sauerkraut are especially helpful for metabolism and help to make meat more digestible. Do not eat condiments that contain sugar or artificial sweeteners like sucralose, aspartame, Equal or Splenda.

Horseradish
(pure, not horse-
radish sauce)

Picante Sauce

Ketchup
(organic, with
no sugar or
sucralose)

Pickle Relish

Salsa

Soy Sauce
(wheat free,
low sodium)

Mustard

Tabasco
Sauce

Olives
(sun dried
or packed
in vinegar)

AVOID

Bread, chips, pretzels, flour, rice, cereals, pasta, potatoes, sugar, chemical sugar-replacements, iodized (table) salt, roasted and salted nuts, commercial dairy products, vegetable oils, sodium-rich foods such as canned soups, processed meats, and trans fats.

PHASE THREE: **MAINTENANCE**

Congratulations on reaching your goal! Now, it is important to maintain your healthy lifestyle including a balanced diet and regular exercise.

By now, you understand the danger processed foods bring to your health and weight control. You have been eating a low-glycemic diet and now it is time to gradually add carbohydrates back into your diet.

AVOID PITFALLS

To avoid common pitfalls, build your lifestyle around the healthy food choices from the Fat Burning Phase. Be aware of what time of day you eat, how much you are taking into your body and the quality of those calories.

Remember to avoid white bread, white flour, pasta, rice and potatoes along with all other highly refined starches and processed foods. Instead, eat only whole grain breads (containing the entire grain), whole grain pasta, whole grain rice, sweet potatoes and red potatoes. By following these guidelines you are eating in a way that avoids spiking your blood sugar and will continue to support the new, healthier you.

Finally, be sure to keep taking your ARIIX Optimals, Omega-Q, and Rejuveniix. These products provide healthy fats, extra energy boost and cellular nutrition important for maintaining a healthy body.



SAMPLE DAY

BREAKFAST

Take ARIIX Slenderiix & Xceler8
as directed

Take ARIIX Optimals

CHOOSE ONE:

PureNourish shake (two scoops) blended
with spinach, water, unsweetened rice
or almond milk (ice is optional)

3 free-range eggs with 1/2 cup
of berries

3 egg omelet with 1+ cups of
vegetables (no cheese)

Scrambled tofu with spinach, garlic,
turmeric and coconut oil

1 cup raw fruit with 10–20 raw almonds.
You can also blend this into a smoothie
using 1/3 cup coconut milk

LUNCH

Take ARIIX Slenderiix & Xceler8
as directed

Up to 8 oz of protein from approved list
(weigh before cooking)

3+ cups of vegetables
(1/2 cup fruit is optional)

SNACK

CHOOSE ONE:

Unsweetened pickles and white turkey breast

Half of a low-carb protein bar

Apple with 1 tbsp almond butter

PureNourish shake

DINNER

Take ARIIX Slenderiix as directed

Take ARIIX Optimals

Note: Xceler8 provides an energy boost, which may cause
sleeplessness. Recommended to take with breakfast and
lunch.

Up to 7 oz of protein from approved list
(weigh before cooking)

2 cups of cooked or raw vegetables
and 1 cup fruit

REMEMBER:

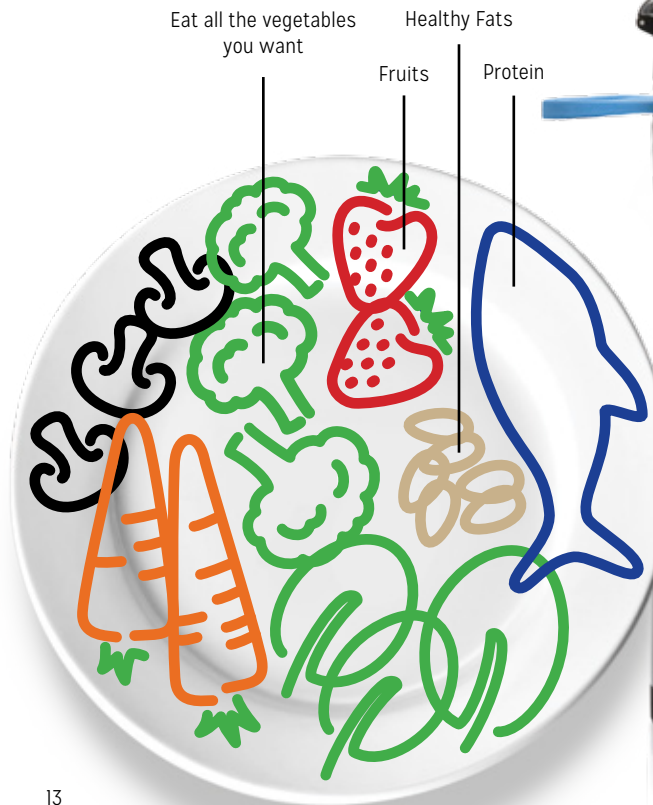
Only eat from the Approved Food List

This plan requires you to count your calories

More recipes at www.slenderiiz.com

THE SLENDERIIZ PLATE

The Slenderiiz plate helps you visualize the proportions of a balanced meal.



Drink a minimum of 100 oz of water per day



Q&A

Q: What should I expect when starting this program?

A: You may experience a withdrawal from processed foods if your diet was high in fast food, frozen prepared or canned food before the program. As these chemical residues work their way out of your system, you may experience some cravings, but it is important to be strong through these first 48 hours so you can get to the good part!

The Slenderix drops will begin to take full effect after about 48 hours. To ensure weight loss, eat plenty of fibrous vegetables like broccoli, cauliflower, spinach, cucumbers, red peppers and cabbage.

If you are truly hungry and not just experiencing withdrawal from the chemicals in processed foods, you need to eat more fiber rich vegetables and drink more water.

Fiber and water intake are extremely important to your success with this program.

Q: Do I need to exercise while on this program?

A: Exercise is important in maintaining a healthy lifestyle. Even small amounts each day will benefit you. Exercise will help you to lose inches though the scale may not reflect it as quickly because you are, at the same time, gaining muscle.

Q: What if I need to cheat?

A: If you are going to deviate from the program at all, then eat more lean proteins or green vegetables and healthy fats.

Try to not eat sweets! Eating sugar, starch and vegetable oils can set your weight loss back and change your fat-burning potential by three to four days.

Small deviations will not usually cause a sudden weight gain, but will slow your weight loss. We prefer that you do not stray from the program, but if you do, be smart in your approach.

Make sure that your departure from the "ideal" is in moderation. Don't allow your cheating to set you back to the point that you give up.

Q: What do I do if I hit a plateau?

A: It is normal to experience plateaus for two to five days. If it persists for longer than six days, you need to do one of two things to push your metabolism out of the plateau to allow your continued weight loss:

Option 1: For one full day, eat only protein, water, Slenderix & Xceler8 drops.

Option 2: Drink three PureNourish shakes a day with two apples as in between meal snacks, Slenderix & Xceler8 drops and plenty of water.

*Shakes can be prepared with two cups of organic baby spinach blended into the shake to increase fiber and digestive-cleansing enzymes.

HANDY TIP: Dr. Ray Strand offers a program to educate, motivate and guide you through your healthier lifestyle transformation. This Healthy for Life Program can be found at www.healthconceptsint.com

- Easy to follow 3-phase weight loss program
- Hormone free Slenderiix drops are scientifically formulated to encourage weight loss
- Xceler8's B12 naturally supports the metabolism of carbohydrates and fats†

HORMONE FREE

SLENDERIIX

HOMEOPATHIC WEIGHT
MANAGEMENT FORMULA

1 Bottle

Indications: Helps to temporarily reduce minor hunger pangs and control appetite to support weight loss efforts.†

Directions: Place .7 ml (approximately 15 drops) under the tongue three times daily before meals. Leave under tongue for 10 seconds, then swallow. Do not eat or drink 10 minutes before or after taking Slenderiix.

Warnings: If pregnant or breast-feeding, do not use. Keep out of reach of children. Not for use of children under 18.

Tamper Resistant Seal: If seal is broken or missing, do not use.

Ingredients: Ammonium Bromatum 12X, Avena Sativa 6X, Calcarea Carbonica 6X, Fucus Vesiculosus 6X, Graphites 12X, Ignatia Amara 6X, Lycopodium Clavatum 6X, Nux Vomica 6X, Sulfuricum Acidum 6X, Thyroidinum 6X

Inactive Ingredients: Grain Alcohol 20%, Natural Flavors, Stevia Leaf, USP Purified Water

Store in a cool place, away from sunlight.

XCELER8

METABOLISM SUPPORT
& INCREASED ENERGY†

1 Bottle

Purpose: Helps metabolism and increased energy in weight loss efforts.†

Directions: Shake well before using. Take 1 ml two times daily, 10 minutes after taking Slenderiix drops with breakfast and lunch. Meal can be eaten immediately following Xceler8.

Warnings: If pregnant or breast-feeding, do not use. Keep out of reach of children. Not for use of children under 18.

Tamper Resistant Seal: If seal is broken or missing, do not use.

Store in a cool place away from sunlight.

† These statements have not been evaluated by the Food & Drug Administration. This product is not intended to diagnose, treat, cure or prevent any disease.

Supplement Facts

Serving Size: 24 drops (1 ml)
Servings Per Container: 59

	Amount	Per Serving	%DV
Vitamin B12 (as Methylcobalamin)	600 mcg	10,000%	
Biotin	100 mcg		33%
Rosehips Fruit Extract	10 mg		*
Acerola Fruit	2.5 mg		*
Proprietary Energy Blend	37.5 mg		*
Green Tea Leaf Extract, Fresh Ashwagandha Root Extract, Rhodiola Rosea Root Extract			

* Daily Value (DV) Not Established

Other Ingredients: Vegetable Glycerin, Water, Stevia Leaf Extract, Peppermint Essential Oil

2x2 fl oz (59 ml) bottles Net